



CAMBRIDGE
International Education



Science

Stage 6

Revision booklet

Paper 1

2026

Cambridge Primary Progression Test

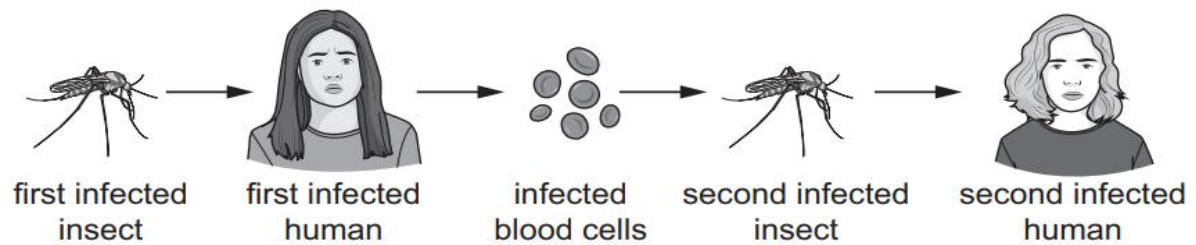
Name

Class

Date

- 1 Malaria is a disease caused by infection with a parasite.

Look at the diagram.



The insect is infected with the parasite.

The infected insect bites the human and transmits the parasite to the human.

- (a) Which word describes the infected insect?

Circle the correct answer.

host

producer

vector

bacteria

[1]

- (b) Which word describes the humans in this diagram?

Circle the correct answer.

host

producer

vector

bacteria

[1]

- (c) Describe **two** ways to avoid being bitten by insects.

1

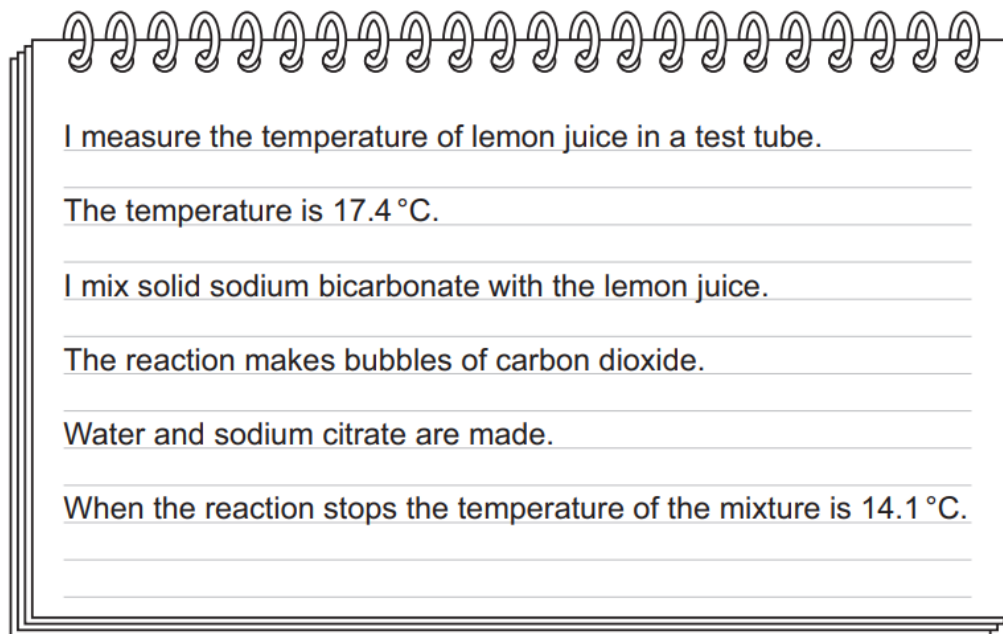
.....

2

.....

[2]

2 Mike describes a chemical reaction in his notebook.



I measure the temperature of lemon juice in a test tube.

The temperature is 17.4 °C.

I mix solid sodium bicarbonate with the lemon juice.

The reaction makes bubbles of carbon dioxide.

Water and sodium citrate are made.

When the reaction stops the temperature of the mixture is 14.1 °C.

(a) Name **one** product in this chemical reaction.

..... [1]

(b) Mike knows it is a chemical reaction because there is a temperature change.

Write down **one other** of his observations that shows it is a chemical reaction.

..... [1]

(c) Calculate the temperature change for this chemical reaction.

temperature change °C [1]

(d) Water freezes and changes into solid ice.

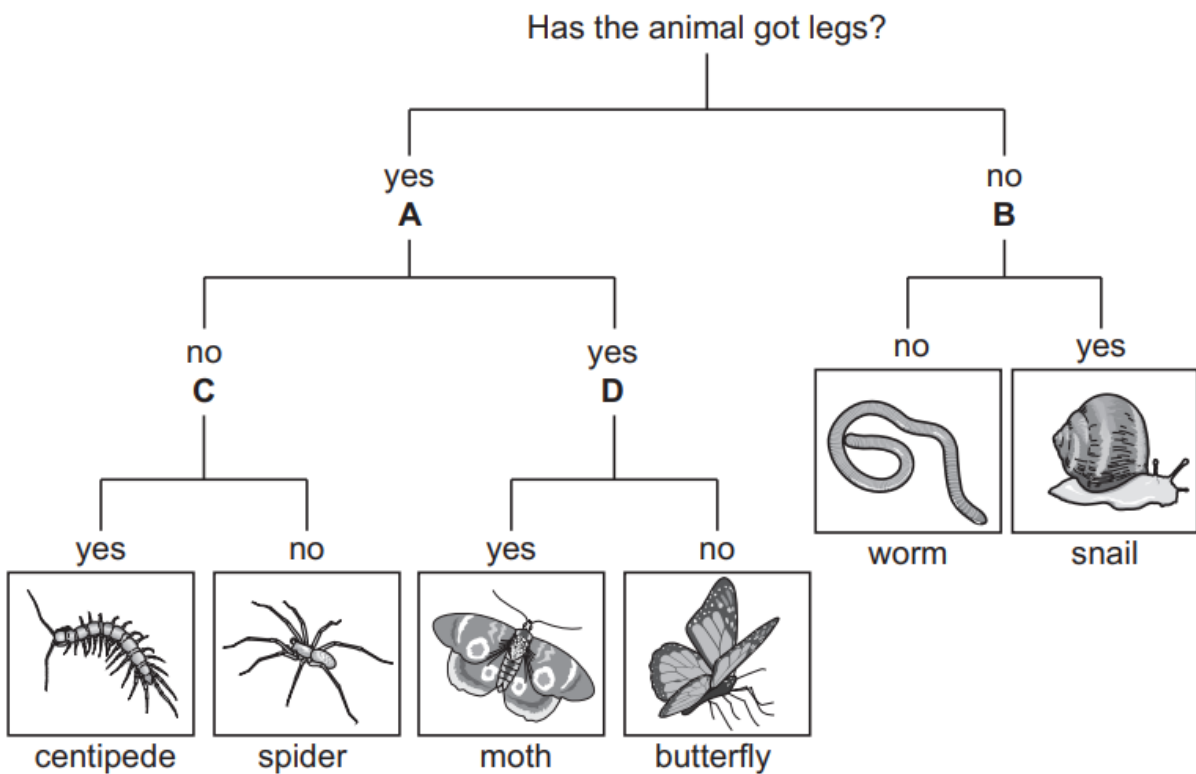
Explain why this is a physical change.

.....
..... [1]

3

Gabriella investigates living things in different food webs from one habitat.

(a) Gabriella starts to draw a key to identify some of the animals in her food webs.



The table shows questions Gabriella uses to finish her key.

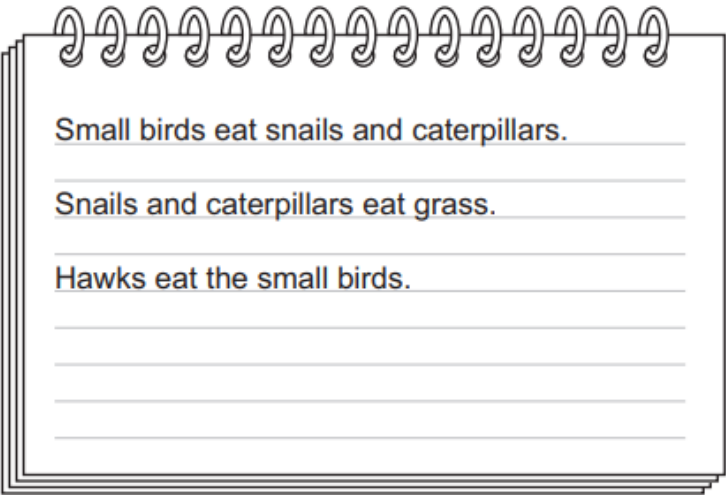
Complete the table to match the question to the correct letter on the key.

One has been done for you.

question	letter on the key
Has the animal got a shell?	
Has the animal got circles on its wings?	D
Has the animal got more than eight legs?	
Has the animal got wings?	

[2]

(b) Gabriella writes about five living things in one food web.



Sort the five living things into herbivores, carnivores and producers.

Complete the table.

herbivores	carnivores	producers

[2]

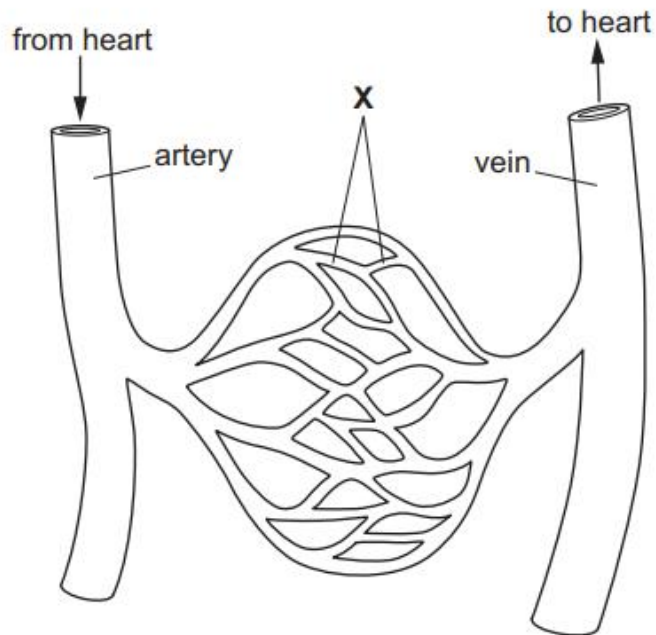
(c) Sorting the living things is a type of scientific enquiry called classification.

Gabriella uses the internet to investigate the food web.

Which type of scientific enquiry is she using?

..... [1]

- 4 The diagram shows some blood vessels in the human body.



- (a) The human body has three types of blood vessels in the circulatory system.

Identify the type of blood vessels labelled **X**.

..... [1]

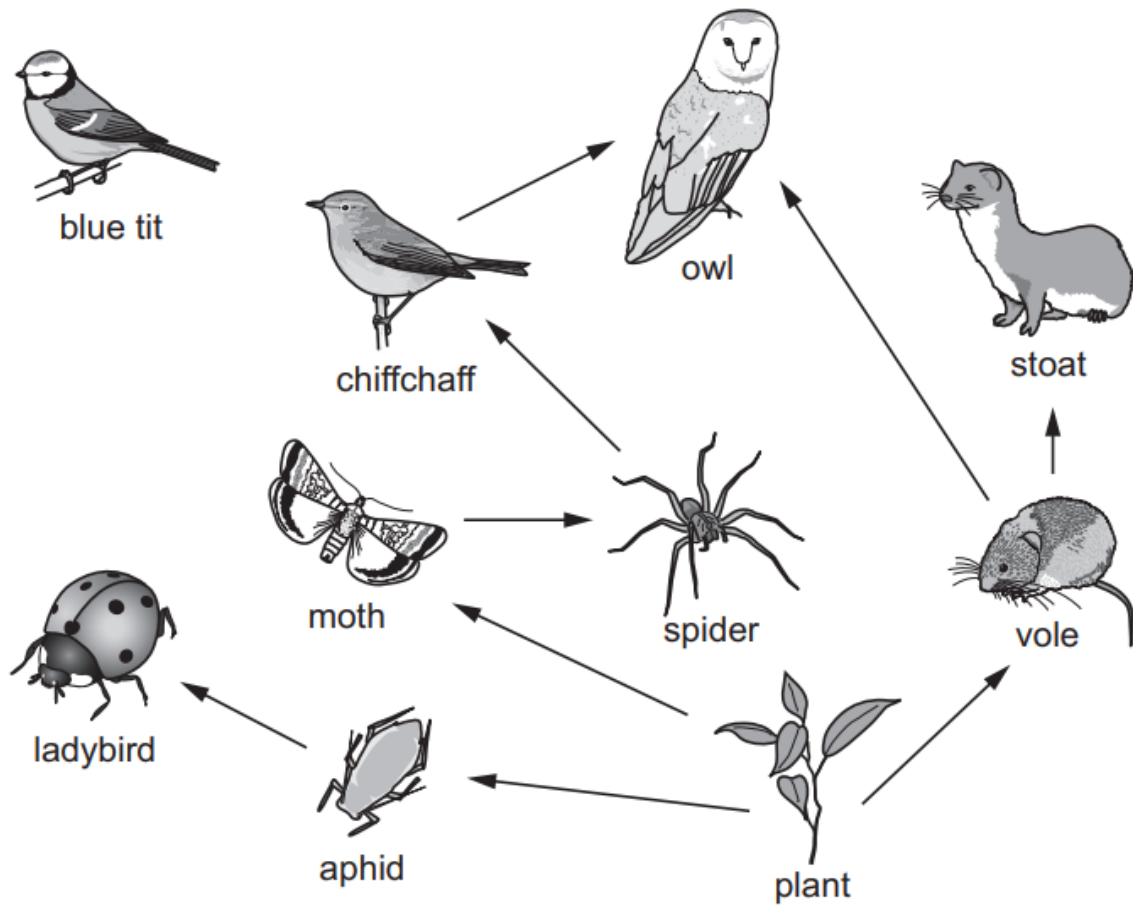
- (b) Write down **two** substances transported by the blood.

1

2

[2]

5 Look at the diagram of a food web from one habitat.



(a) The food web is **not** complete:

- the owl also eats the blue tit
- the blue tit eats the ladybird **and** the moth

Draw **three** arrows on the food web to show these relationships.

[1]

(b) How many predators in this food web feed on the vole?

[1]

(c) Describe how energy from the plant is transferred to the spider.

[2]

6

Bacteria cause infectious diseases.

The human body has defence mechanisms against these infectious diseases.

(a) Draw a straight line to match each **defence mechanism** to its correct **description**.

**defence
mechanism**

description

acid

covers the body to stop entry of bacteria

mucus

kills bacteria in the stomach

skin

stops bacteria getting into our ears

traps bacteria in the lungs

[2]

(b) Complete the sentence about the spread of diseases.

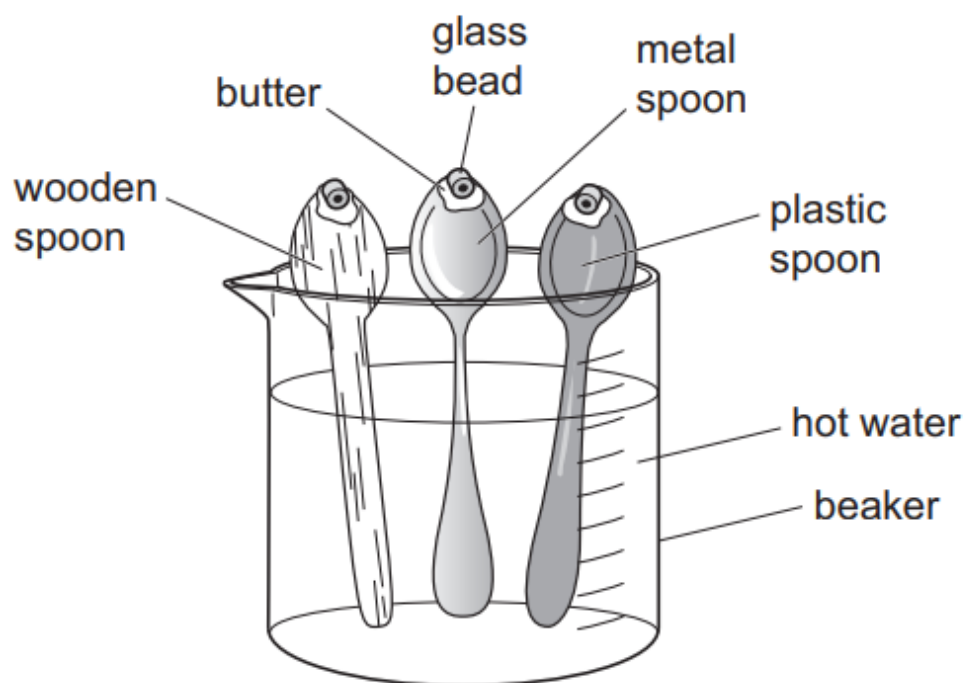
Diseases are transmitted in water, food and body [1]

7 Jamila investigates thermal conductivity.

In her experiment Jamila:

- puts three different spoons into a beaker
- uses butter to stick glass beads onto the end of each spoon
- pours hot water into the beaker
- observes when the glass beads fall from the spoons.

The diagram shows the equipment she uses.



Jamila writes down this observation;

**'The glass bead from the metal spoon falls first.
The glass bead on the plastic spoon falls next.
The glass bead on the wooden spoon stayed the longest.'**

(a) The glass beads fall when the butter melts.

The butter melts when the heat from the water reaches the end of the spoon.

Write down **one** conclusion about the thermal conductivity of the different spoons.

.....
..... [1]

(b) Describe one possible safety risk in this investigation and how to reduce this risk.

safety risk

.....

how to reduce this risk

.....

.....

[2]

(c) Thermal conductivity is one property of a substance.

Write down the **other** type of **conductivity** that is a property of substances.

..... [1]