

- 1 Urine contains urea, excess water and excess ions.

The list shows some organs.

kidney liver ureter
urethra vagina

State the name of the organ from the list that excretes urea.

..... [1]

[Total: 1]

- 2 Urine contains urea, excess water and excess ions.

The list shows some organs.

kidney liver ureter
urethra vagina

State the name of the organ from the list that produces urea.

..... [1]

[Total: 1]

- 3 Outline the role of the liver in excretion.

.....
.....
.....
.....
.....
.....
.....

[3]

[Total: 3]

- 4 People with kidney disease are often treated in renal dialysis clinics. Their blood passes through tubes lined with a special membrane for about three hours.

State **two** waste substances that are removed from the blood by dialysis.

1

2 [2]

[Total: 2]

- 5 One effect of the release of the hormone adrenaline is to increase blood glucose concentration. This allows more aerobic respiration to occur.

State how adrenaline is transported to its target organs.

.....

..... [1]

[Total: 1]

- 6 State the name of the organ that secretes the hormone insulin.

.....

[1]

[Total: 1]

- 7 The table shows a list of activities.

Tick the boxes that would result in a release of adrenaline.

bungee jumping	
sitting an exam	
going for a gentle walk	
reading a textbook	
drinking water	
hearing a sudden noise	
painting a picture	

[3]

[Total: 3]

- 8 Blood flows from arteries into arterioles before entering capillaries.

Explain the role of the arterioles in the skin when a person is very cold.

.....

.....

.....

.....

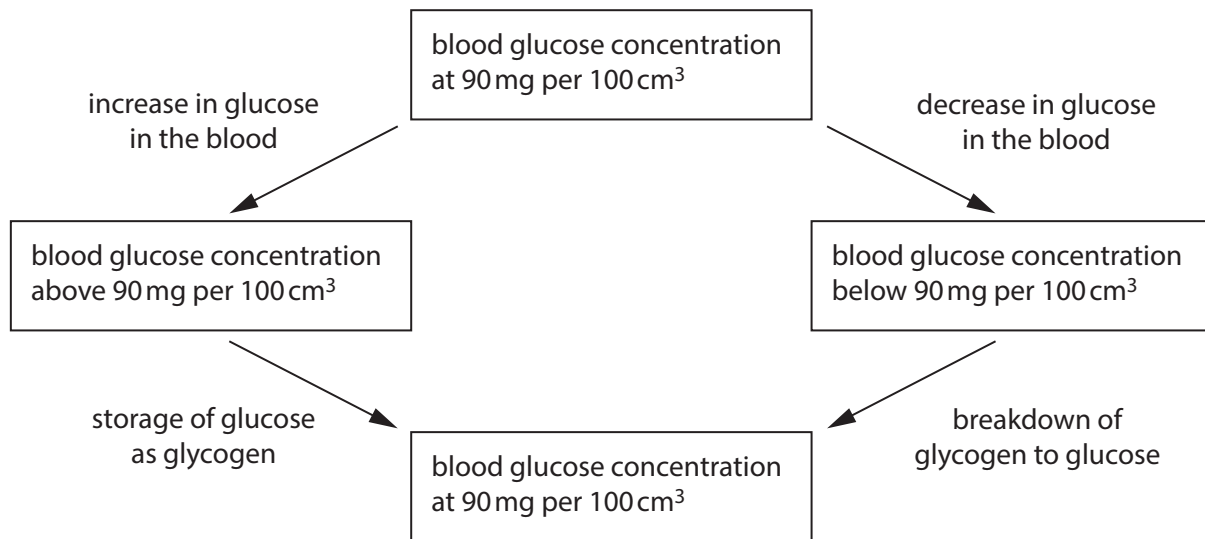
.....

.....

[3]

[Total: 3]

- 9 Below is a diagram that shows the control of blood glucose concentration.



- (a) (i) State **one** reason why the concentration of glucose in the blood **increases**.

.....

..... [1]

- (ii) State **one** reason why the concentration of glucose in the blood **decreases**.

.....

..... [1]

- (iii) Name **two** places in the body where glycogen is stored.

1

2 [2]

[Total: 4]

- 10 Xylem is a specialised plant tissue.

State **two** functions of xylem tissue.

1

2 [2]

[Total: 2]

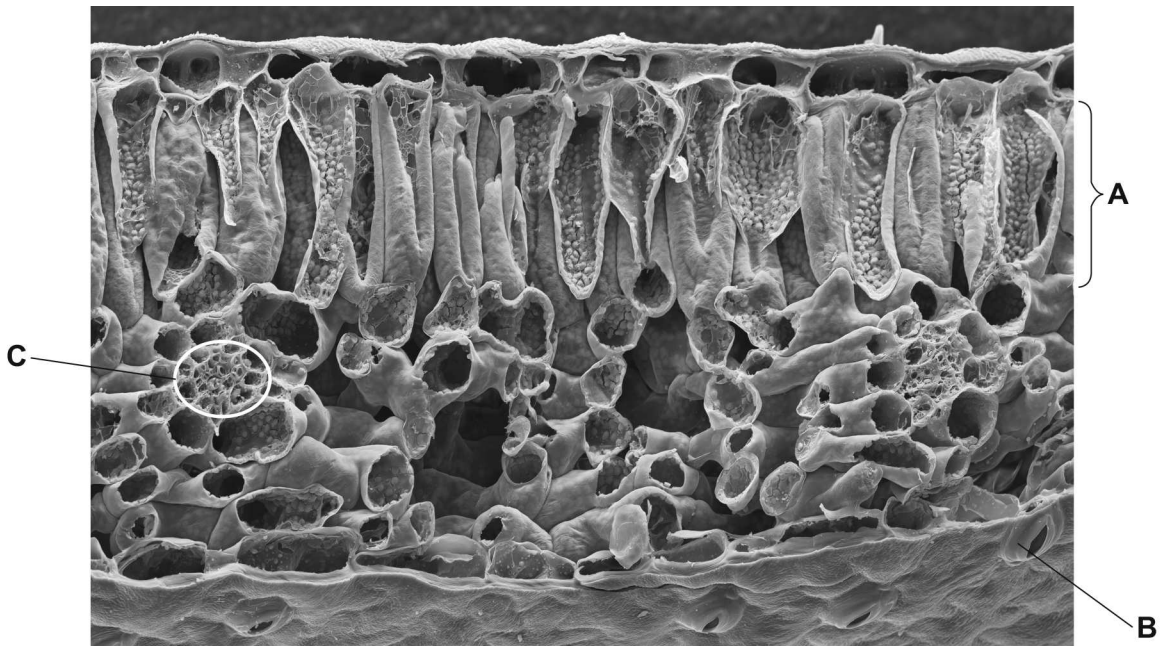
- 11 Plants absorb mineral ions from the soil.

State the name of the tissue that transports mineral ions in plants.

..... [1]

[Total: 1]

- 12 The photomicrograph shows a cross-section of part of a leaf.



Structure **C** in the photomicrograph is part of the transport system in the leaf.

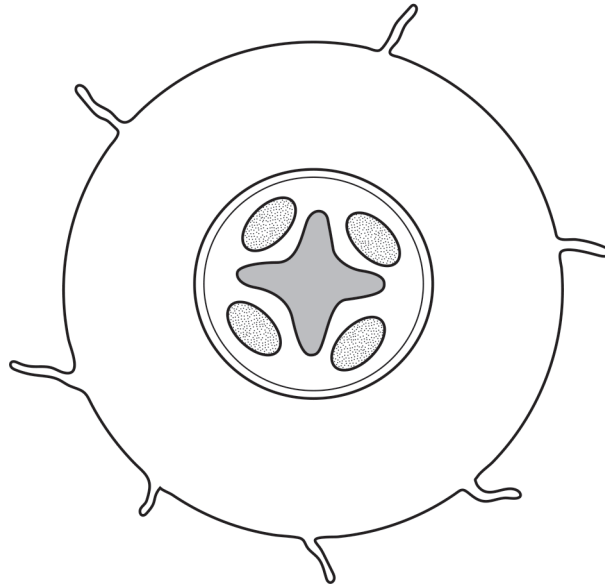
State the names of **two** tissues that structure **C** contains.

1

2 [2]

[Total: 2]

13 The diagram is a drawing of a cross-section of a root.



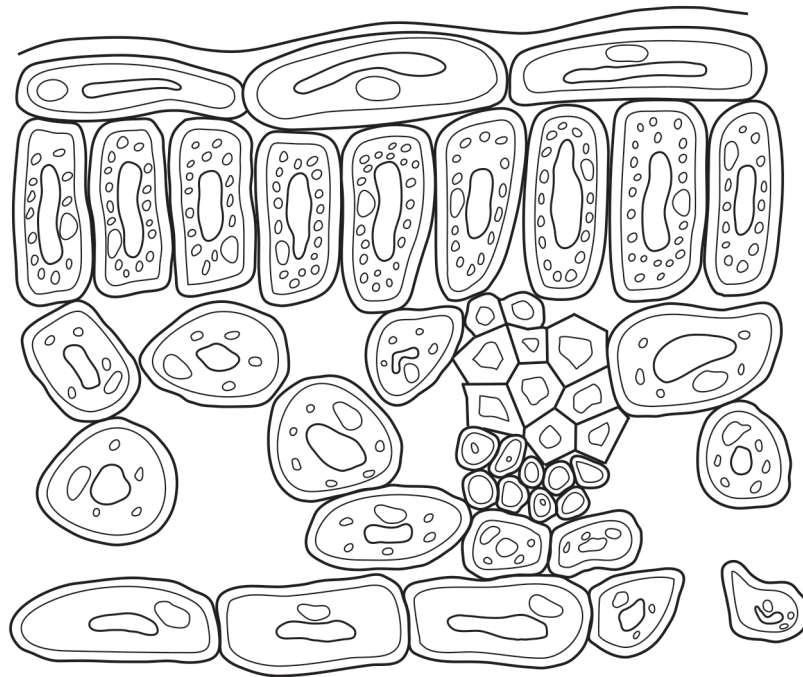
Identify **and** label the structures on the diagram using label lines and the labels:

- root hair
- phloem
- xylem.

[3]

[Total: 3]

14 The diagram shows a section through a leaf.



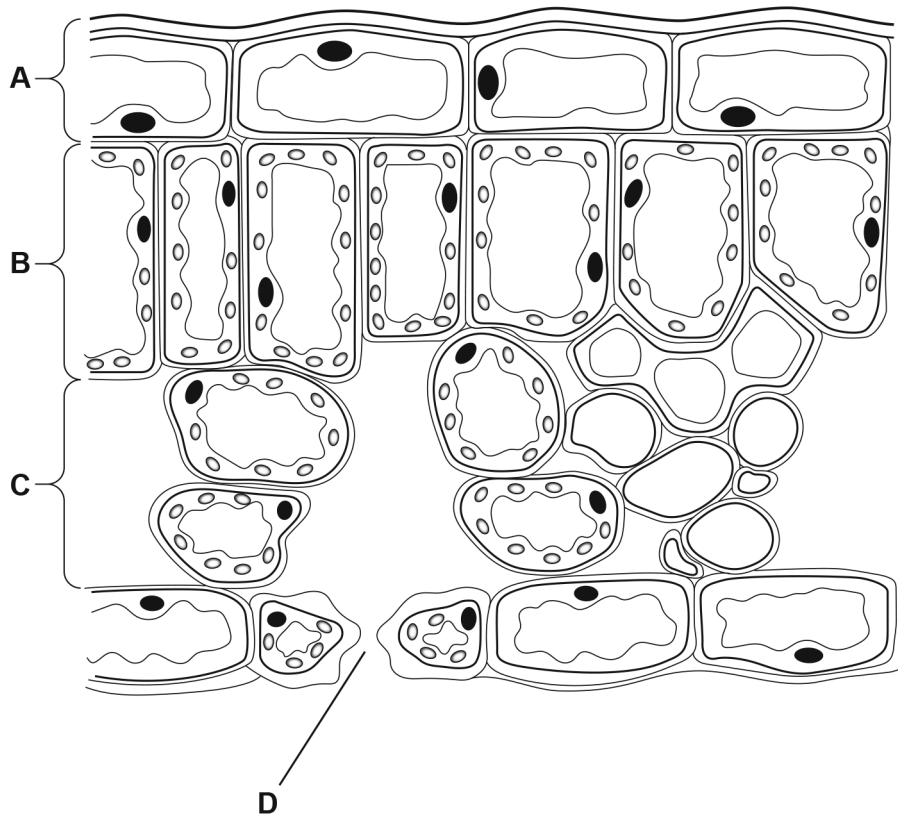
On the diagram:

Label with a label line **and** the letter **A** the type of cell where most photosynthesis takes place.

Label with a label line **and** the letter **B** the type of cell which conducts water through the plant. [2]

[Total: 2]

15 The diagram shows a cross-section of a leaf.



State the name of the tissue in the leaf that does **not** contain chlorophyll.

..... [1]

[Total: 1]