

- 1 The testes are part of the endocrine system because they produce hormones.

State the name of the hormone released from the testes.

..... [1]

[Total: 1]

- 2 Pregnancy can occur after the fusion of a male gamete and a female gamete.

Describe the functions of amniotic fluid and the amniotic sac.

.....  
.....  
.....  
.....  
.....  
.....  
.....  
.....  
.....  
.....  
..... [4]

[Total: 4]

- 3 The umbilical artery is found in the umbilical cord. This artery transports blood away from the heart of the fetus.

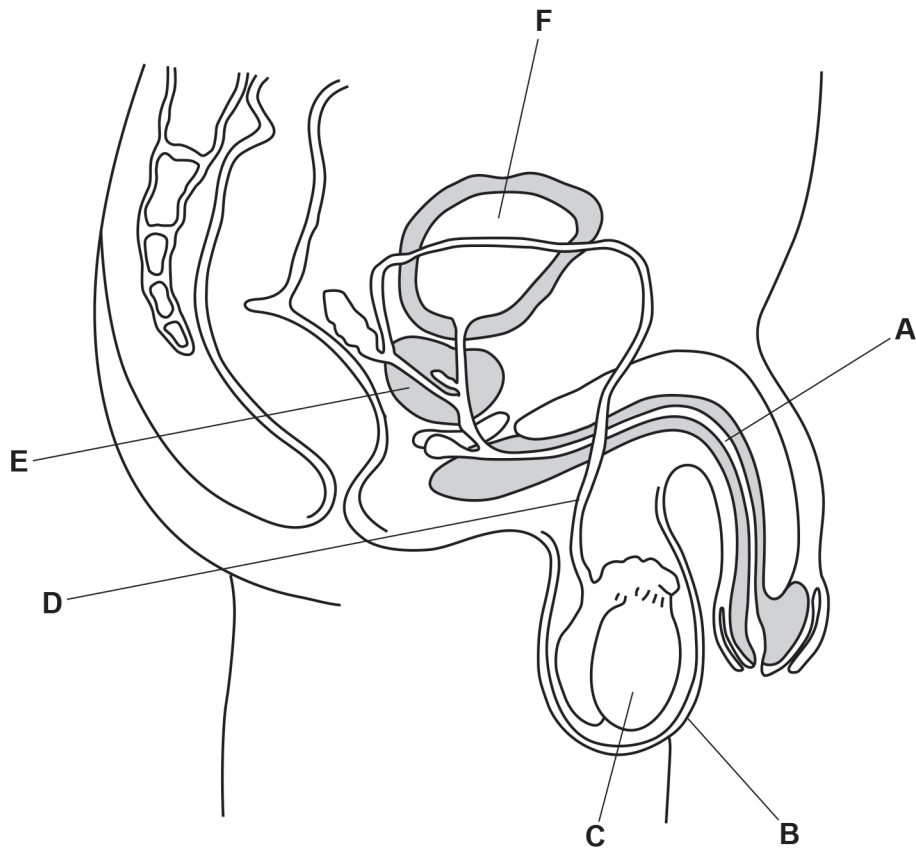
The umbilical artery is unusual because it transports deoxygenated blood.

State **one** excretory product that is transported from the fetus to the placenta.

..... [1]

[Total: 1]

- 4 The diagram shows the male reproductive system.



The table shows information about the male reproductive system shown in the diagram.

Complete the table.

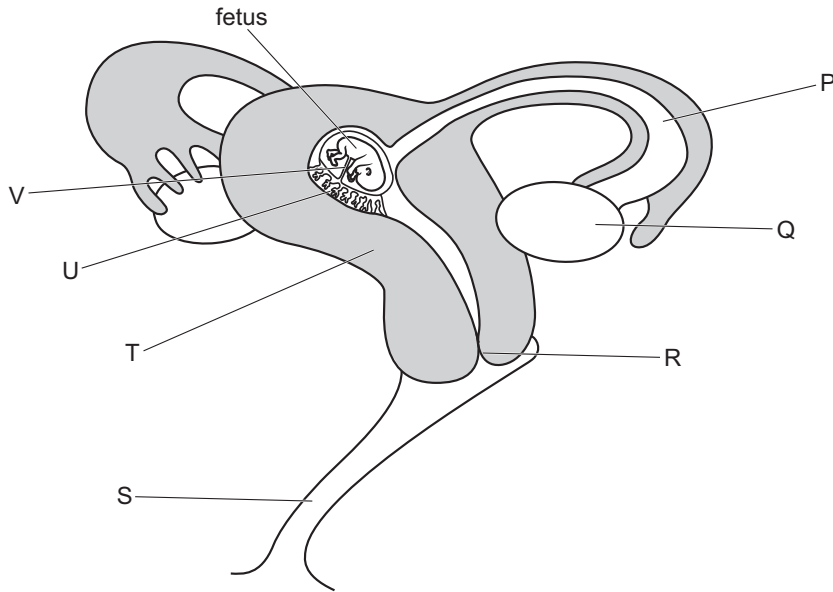
name of structure	function	letter in diagram
testis		
	transports sperm but not urine	
	tube for urine and seminal fluid through the penis	
prostate gland		
	contains the testes	

[5]

[Total: 5]

- 5** During pregnancy menstruation does not occur.

The diagram shows some of the organs of a pregnant woman, viewed from the side.



Describe what happens between ovulation and the formation of a fetus.

Use the letters in the diagram to support your answer.

[illegible]

[6]

[Total: 6]

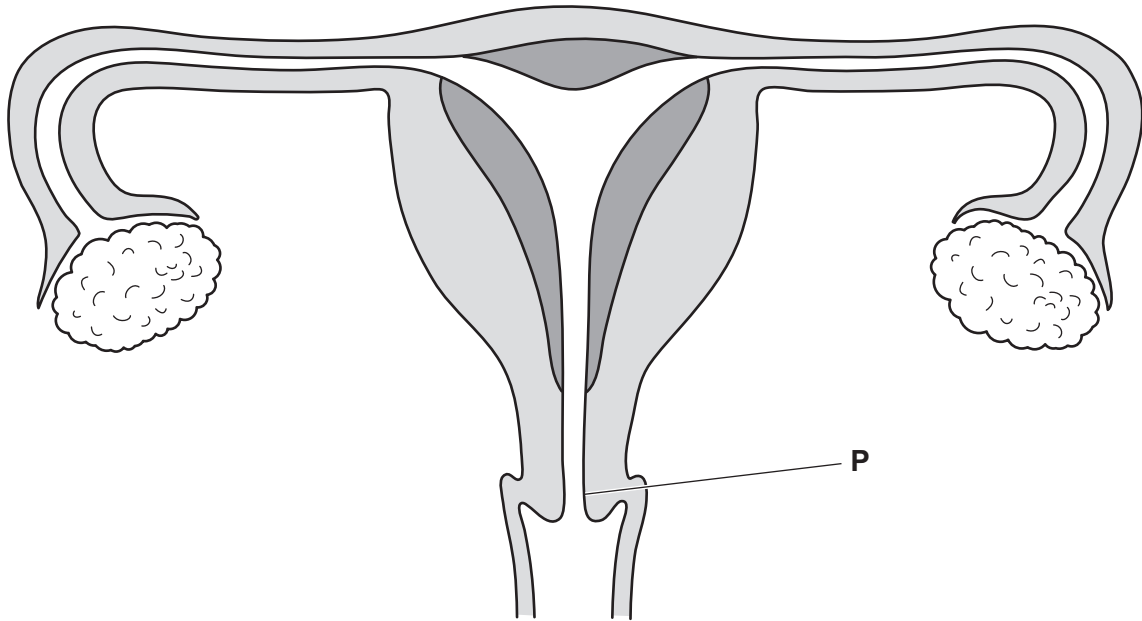
- 6 Pregnancy can occur after the fusion of a male gamete and a female gamete.

State the name of the ball of cells that implants into the uterus after fertilisation.

..... [1]

[Total: 1]

- 7 The diagram shows the female reproductive system.



Label the diagram using the letters listed to show the position of the organs that are identified by their functions.

The first one (**P**) has been completed for you.

**P** site of secretion of mucus

**Q** site of fertilisation

**R** site of implantation

**S** site of oestrogen secretion

**T** site where sperm are deposited during sexual intercourse

[4]

[Total: 4]

- 8 Rubella and kwashiorkor are two diseases that affect children.

Rubella is a transmissible disease and kwashiorkor is a non-transmissible disease.

Explain why women should be vaccinated against rubella before they reach reproductive age.

.....

.....

.....

.....

.....

.....

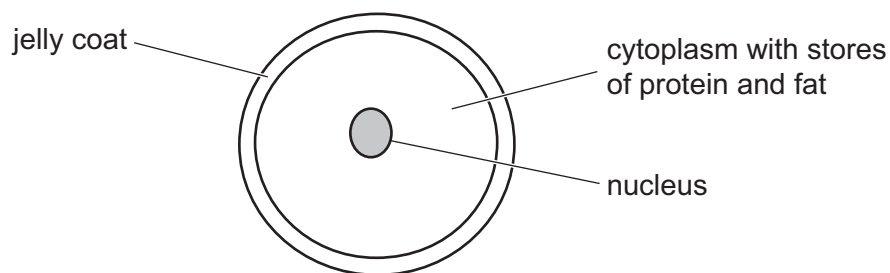
.....

.....

[4]

[Total: 4]

- 9 The diagram shows a section through an egg cell at the time of ovulation.



Explain why the egg cell contains stores of protein and fat.

.....

.....

.....

.....

.....

.....

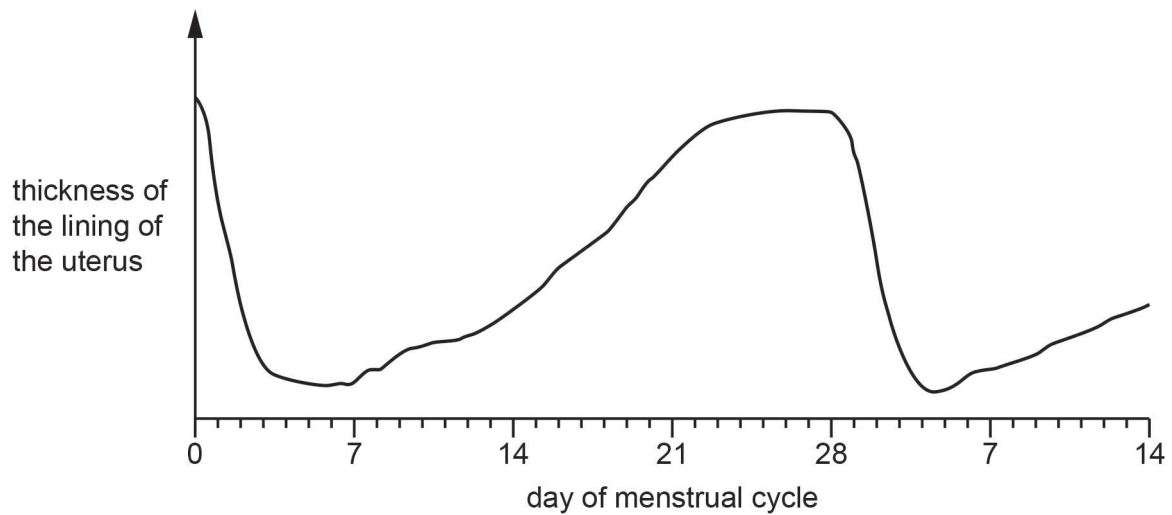
.....

.....

[3]

[Total: 3]

10 The graph shows the changes in the lining of the uterus of a human female.



Describe the changes in the lining of the uterus between days 0 and 28 of the menstrual cycle.

*between days 0 and 7* .....

.....

.....

.....

*between days 7 and 28* .....

.....

.....

.....

.....

[3]

[Total: 3]

- 11** The activities of the ovaries and the uterus are regulated by the hormones FSH, LH, oestrogen and progesterone during the menstrual cycle.

Complete the table to show the sites of production and the roles of these four hormones.

hormone	site of production	target organ	role
FSH	pituitary gland	ovary	
LH	pituitary gland	ovary	
oestrogen		uterus	stimulates growth of the lining of the uterus
progesterone		uterus	

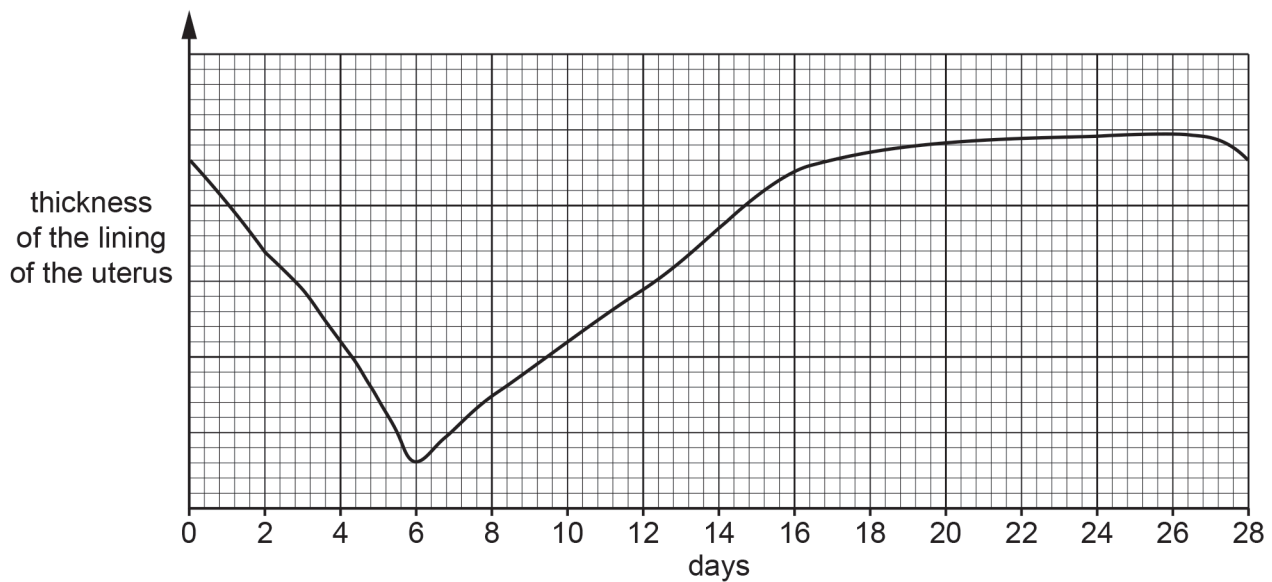
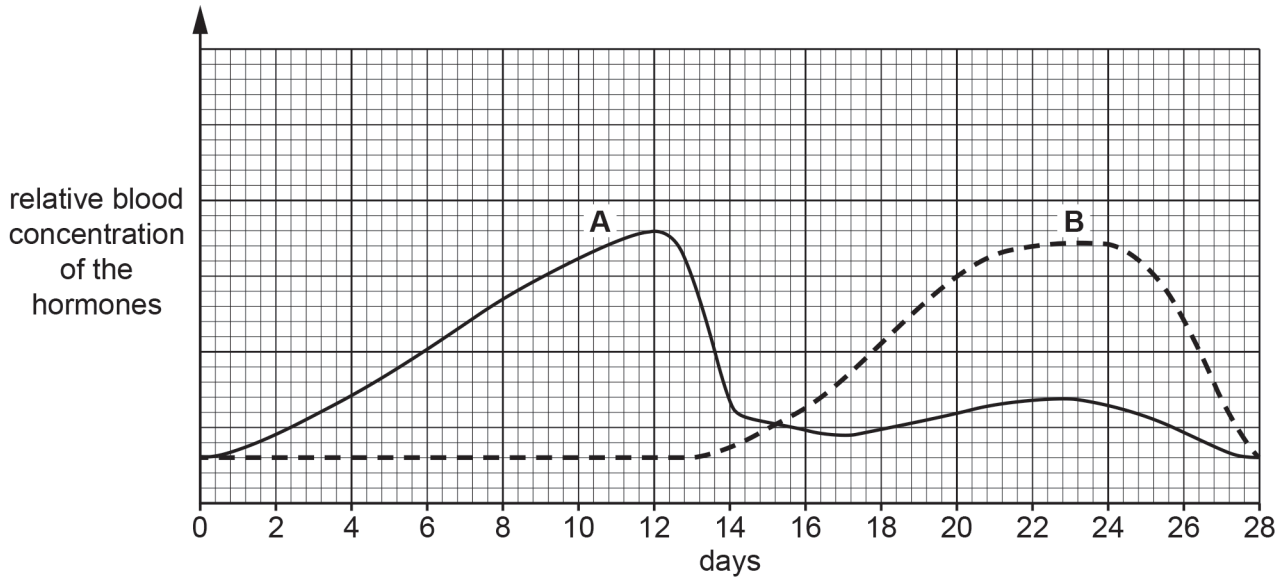
[5]

[Total: 5]



12 The two graphs represent:

- the relative blood concentrations of two hormones, **A** and **B**, released by the ovaries during the menstrual cycle
- the thickness of the lining of the uterus.



Describe the roles in the menstrual cycle of hormone **A**.

.....

.....

.....

.....

.....

..... [3]

[Total: 3]

- 13** The table shows some of the events that occur in the menstrual cycle.

<b>A</b> follicle is fully developed
<b>B</b> gamete is released into the oviduct
<b>C</b> lining of the uterus is removed from the body
<b>D</b> lining of the uterus reaches a maximum thickness
<b>E</b> lining of the uterus gets thicker

State the name of the hormone that stimulates event **A** to occur.

..... [1]

[Total: 1]

- 14** The table shows some of the events that occur in the menstrual cycle.

<b>A</b> follicle is fully developed
<b>B</b> gamete is released into the oviduct
<b>C</b> lining of the uterus is removed from the body
<b>D</b> lining of the uterus reaches a maximum thickness
<b>E</b> lining of the uterus gets thicker

Put the events shown in the table into the correct sequence.

One has been done for you.

		<b>B</b>		
--	--	----------	--	--

[1]

[Total: 1]

**15** Describe the effects of HIV on the immune system.

.....

.....

.....

.....

.....

.....

.....

..... [3]

[Total: 3]

**16** Chlamydia is a sexually transmitted infection (STI).

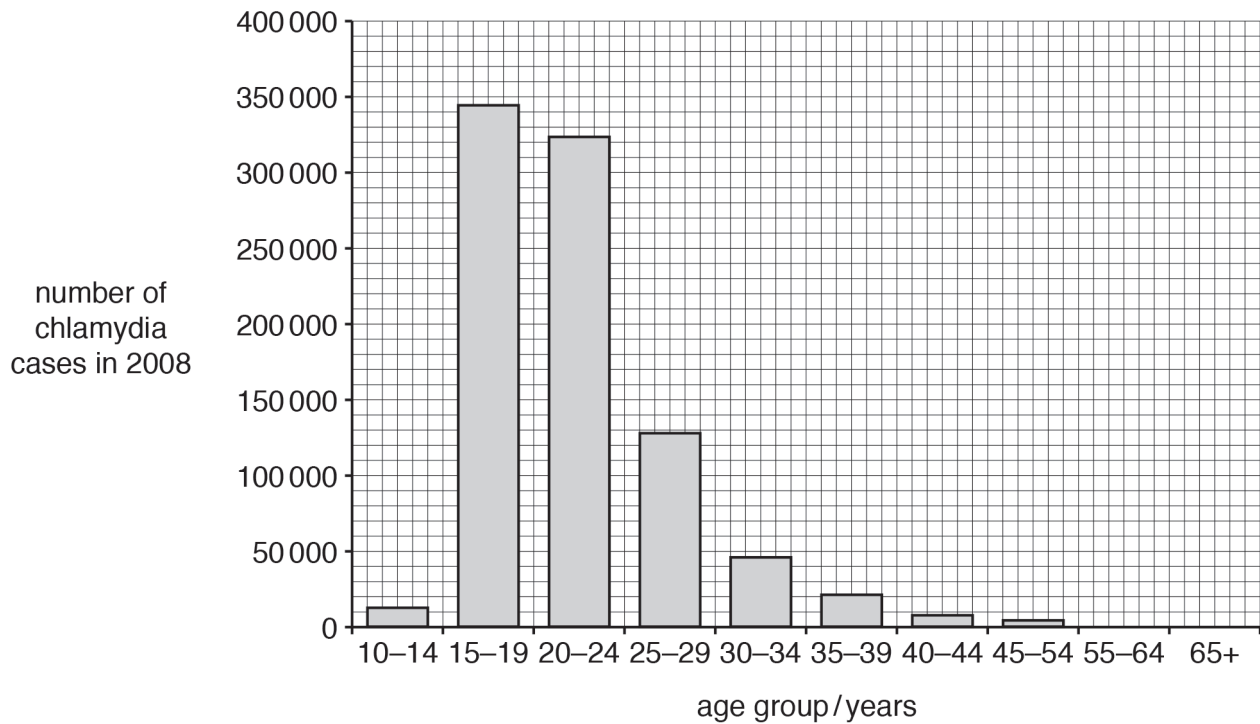
State the name of **one other** STI.

..... [1]

[Total: 1]

**17** Chlamydia is a sexually transmitted infection (STI).

The graph shows the number of reported cases of chlamydia in females in each age group in one country.



Describe the results shown by the data in the graph.

.....

.....

.....

.....

.....

.....

.....

[3]

[Total: 3]

**18** Drugs can be injected into the body. This is one way that HIV can be transmitted.

Describe **two** other ways that HIV can be transmitted.

1 .....

.....

2 .....

..... [2]

[Total: 2]