



**First Exam**

Name:	Sixth grade	Date:	9 \10 \2025
Subject:	Science	Mark:	/ 20
Grade:	Sixth grade	Time:	45 minutes

**Q1: Circle the correct answer. ( /10 marks)**

1. The \_\_\_\_\_ controls the activities of the cell

a) absorbs light

c) cell membrane

☒ b) nucleus

d) vacuole

2. The \_\_\_\_\_ is a jelly-like substance in which chemical reactions take place

☒ a) cytoplasm

c) vacuole

b) mitochondria

d) cell membrane

3. The \_\_\_\_\_ holds the cytoplasm together and controls which substances pass into and out of the cell

a) nucleus

☒ c) cell membrane

b) cytoplasm

d) mitochondria

4. Plant cells also contain a \_\_\_\_\_ to strengthen the cell

☒ a) cell wall

c) cell membrane

b) mitochondria

d) cytoplasm

5. The cell membrane selectively \_\_\_\_\_ of the cell

a) make proteins

c) release energy

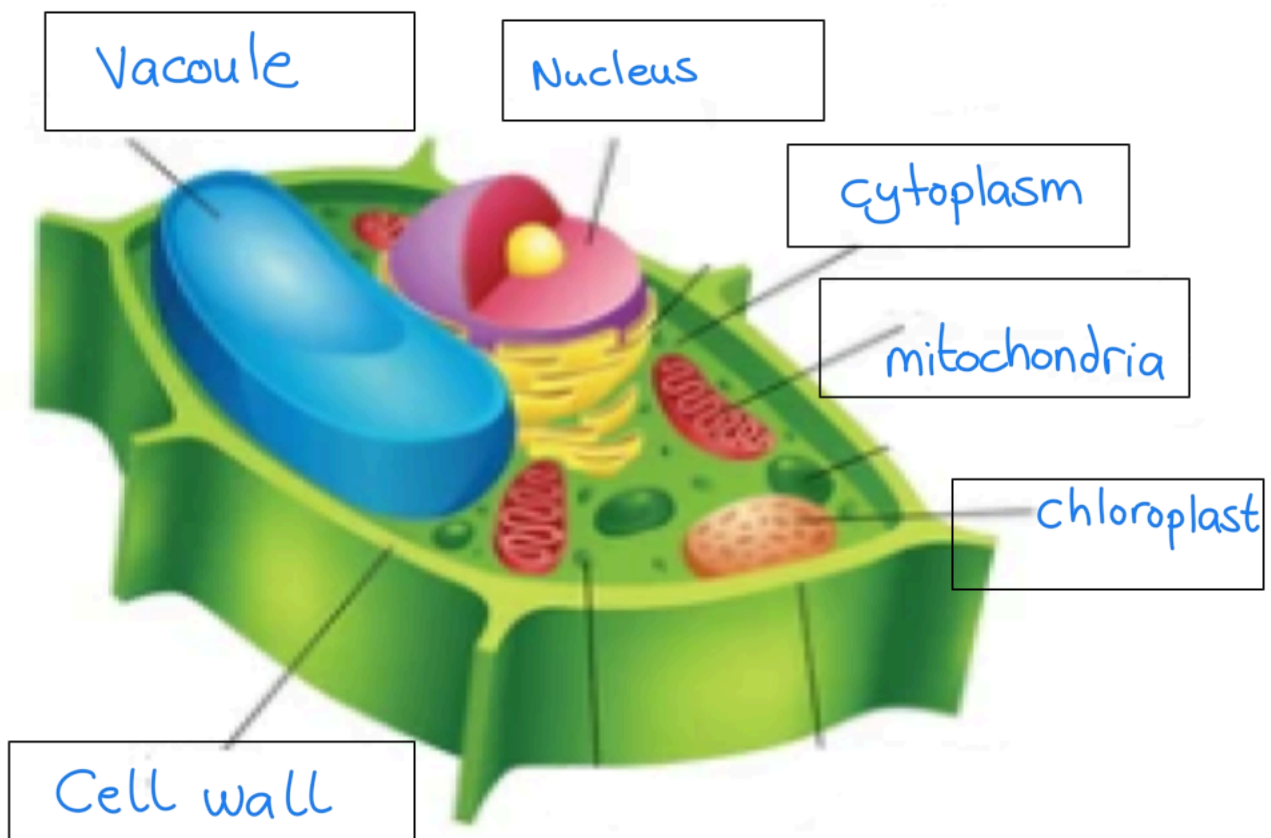
☒ b) allows substances into and out

d) strengthens the cell

**Q2: What is the difference between a simple microscope and a compound microscope ? ( /2 marks )**

Simple microscope	Compound microscope
- Has one ocular lens	- Has two ocular lenses

**Q3: Label each of the following parts. ( /6 marks)**



**Q4: Write two parts of the microscope .**

**( / 2marks)**

1. Body tube
2. nose piece

**Science Department  
Teacher: Sara Samawi**



